

HUE: RUG

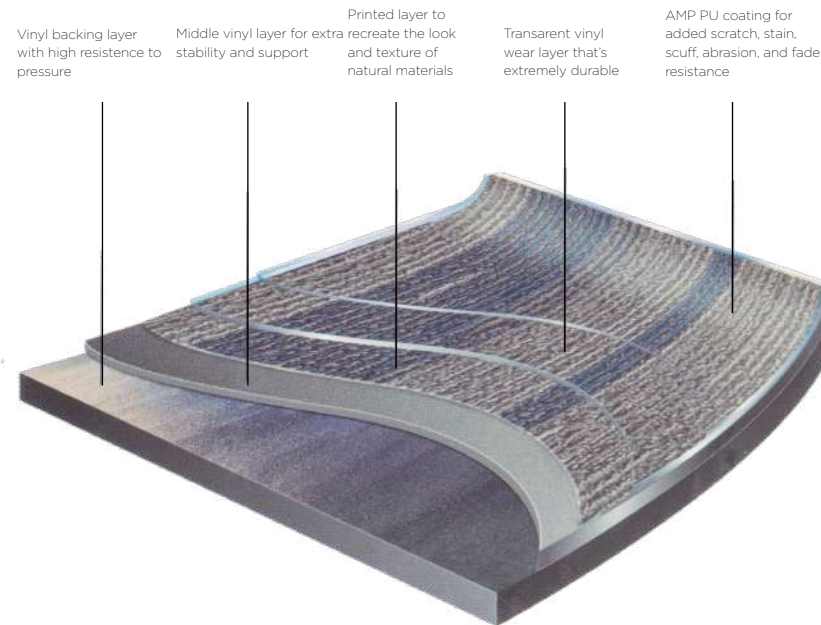
HELM

FLOORING



HELM

FLOORING

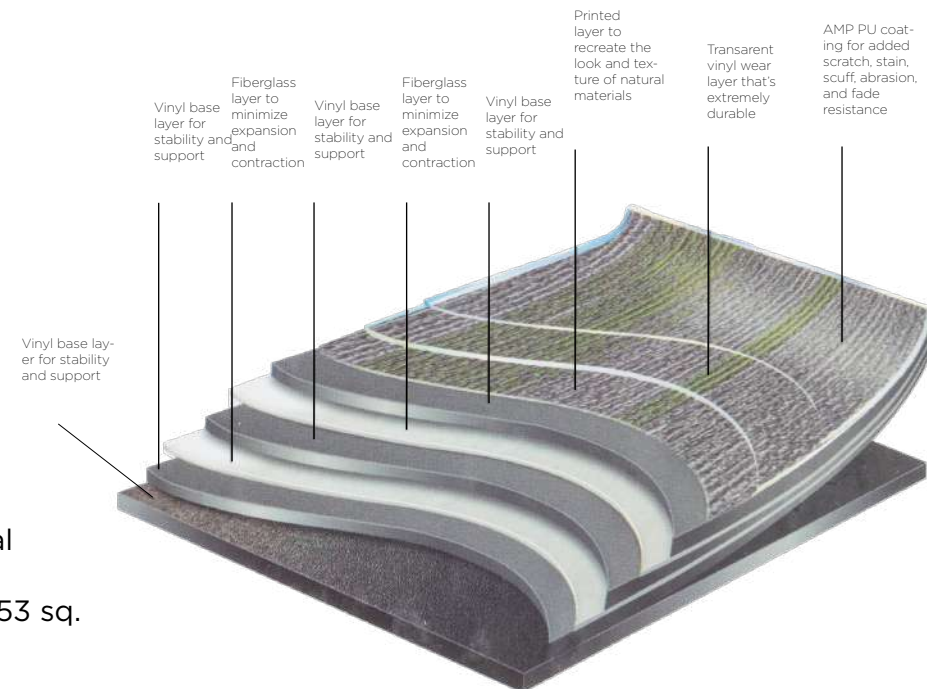


GLUE DOWN SPECIFICATIONS

- Wear Layer: 22mil (0.55mm)
- Overall Thickness: 2.5 mm
- Size 9.84" x 39.37" (250mm x 1000mm)
- 100% Phthalate Free
- Reach Compliant
- Warranty: 20-Year Commercial and Lifetime Residential
- Carton Quantity: 16 Pieces (43.06 sq. ft.)

LOOSE LAY SPECIFICATIONS

- Wear Layer: 22mil (0.55mm)
- Overall Thickness: 5.0 mm
- Size 9.84" x 39.37" (250mm x 1000mm)
- 100% Phthalate Free
- Reach Compliant
- Warranty: 20-Year Commercial and Lifetime Residential
- Carton Quantity: 8 Pieces (21.53 sq. ft.)



- Patented Coating
- 30% More Scratch Resistance Over Typical Coatings
- Exceptional Wear Resistance and High Strength
- Low-gloss finish

SPECIFICATIONS:

SOLID VINYL TIDE:	CLASS III, TYPE B
RESIDUAL INDENTATION:	PASSES, <10%
FLEXIBILITY:	PASSES, 25.4MM MANDREL
DIMENSIONAL STABILITY:	PASSES, <0.020 IN. PER LIN. FT.
CHEMICAL RESISTANCE:	PASSES (ASK FOR CHART)
HEAT COLOR STABILITY:	PASSES, < Δ8E
LIGHT COLOR STABILITY:	PASSES, < Δ8E
STATIC LOAD LIMIT:	PASSES, 250 LBS.
MODIFIED FOR MAX WEIGHT:	1,450 LBS. (GLUE DOWN); 1,200 LBS. (LL)
CRITICAL RADIANT FLUX:	CLASS I, >0.45 W/CM ²
SMOKE DENSITY:	PASSES, <450
SLIP RESISTANCE:	>0.6 (DRY)



ABERDEEN

GLUE DOWN: ADB11 / LOOSE LAY: ABD11L



ACADEMY

GLUE DOWN: ACA31 / LOOSE LAY: ACA31L



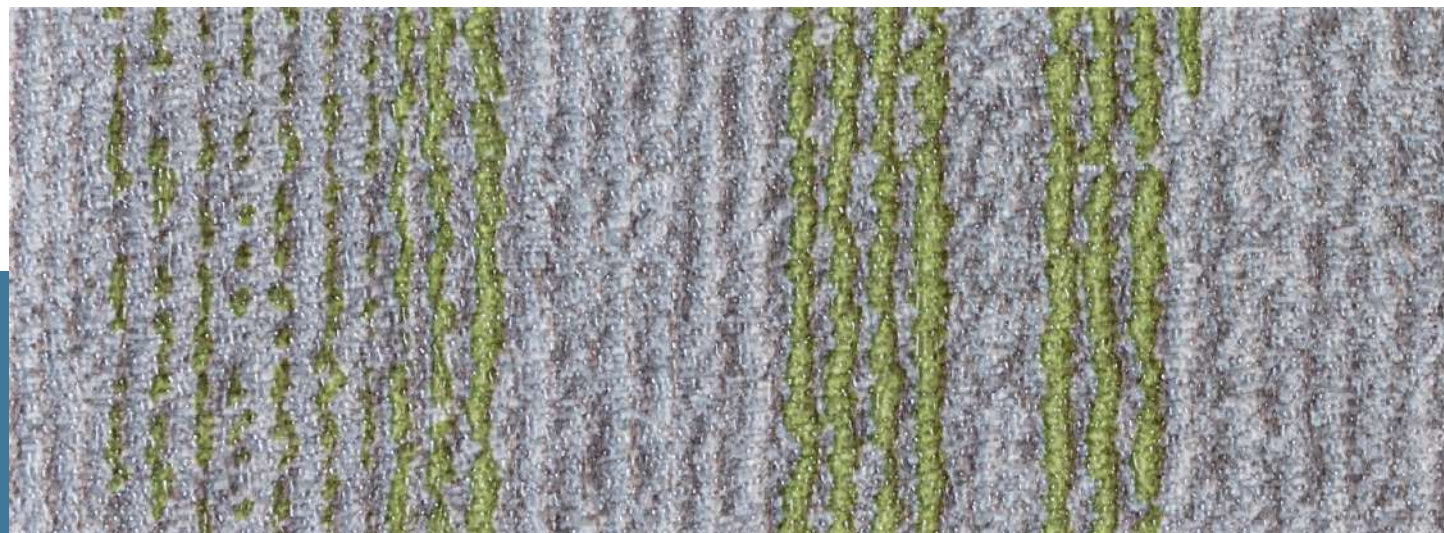
ABINGDON

GLUE DOWN: ABI11 / LOOSE LAY: ABI11L



ACADIA

GLUE DOWN: ACD32 / LOOSE LAY: ACD32L



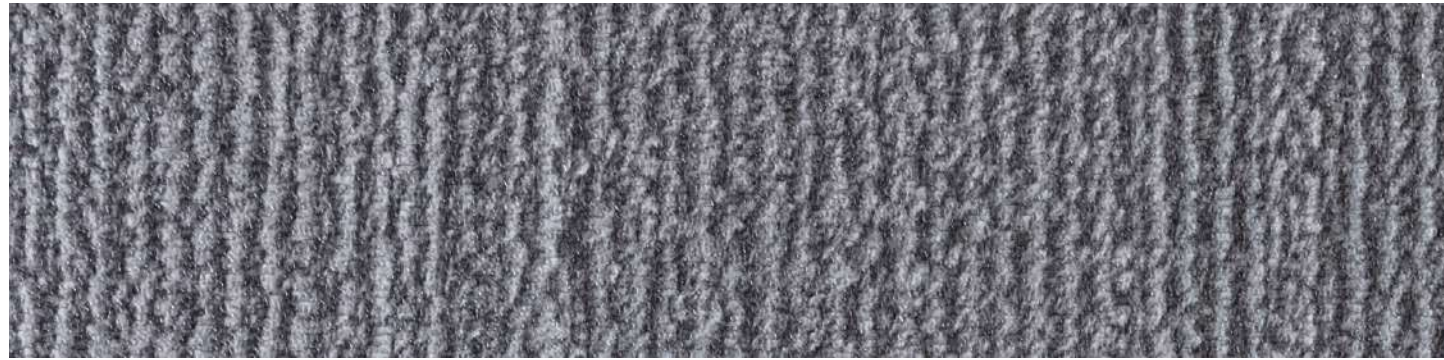
ABRON

GLUE DOWN: ABR13 / LOOSE LAY: ABR13L



ADLER

GLUE DOWN: ADL33 / LOOSE LAY: ADL33L



ALTMONT

GLUE DOWN: ALT21 / LOOSE LAY: ALT21L



ALNICK

GLUE DOWN: ALN22 / LOOSE LAY: ALN22L



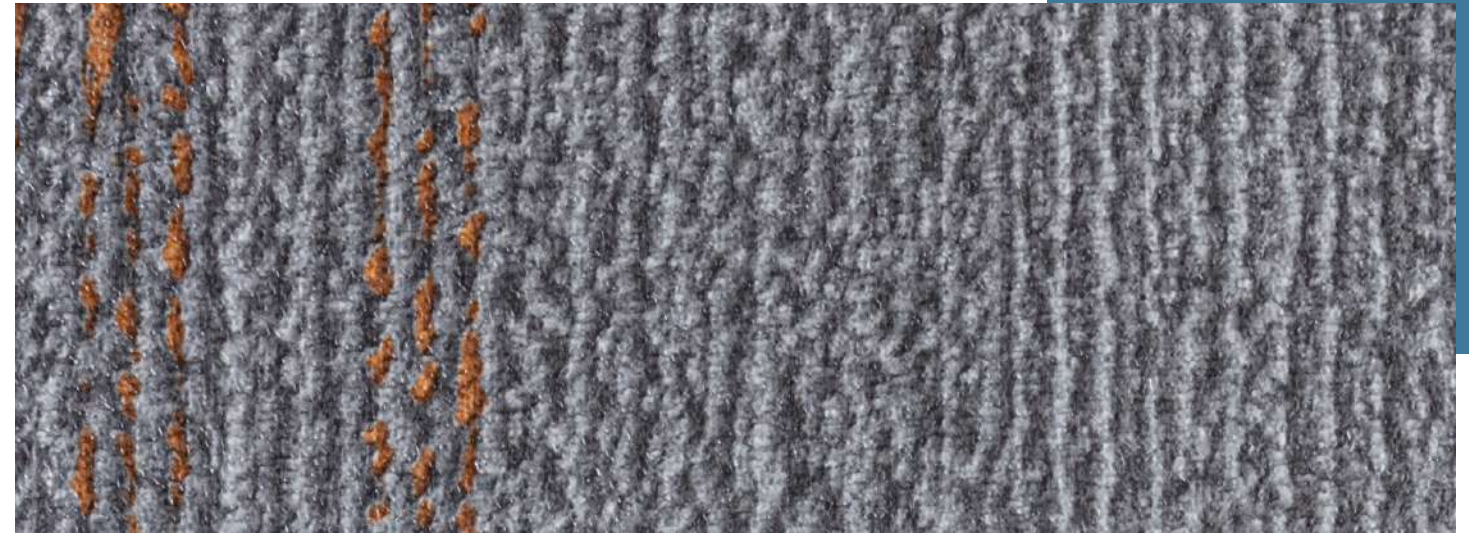
ALPHA

GLUE DOWN: ALP23 / LOOSE LAY: ALP23L



ALYEA

GLUE DOWN: ALY24 / LOOSE LAY: ALY24L



ANDROVER

GLUE DOWN: STR025 / LOOSE LAY: STR025L



ANGIER

GLUE DOWN: STR041 / LOOSE LAY: STR041L



APEX

GLUE DOWN: STR051 / LOOSE LAY: STR051L



HELM

FLOORING